

**CD24 Antibody**  
**Rabbit mAb**  
**Catalog # AP92715**

## Specification

---

### CD24 Antibody - Product Information

Application	<b>WB, IP</b>
Primary Accession	<a href="#">P25063</a>
Clonality	<b>Monoclonal</b>
<b>Other Names</b>	
CD24; CD24 antigen; CD24A; HAS; Signal transducer CD24;	
Isotype	<b>Rabbit IgG</b>
Host	<b>Rabbit</b>
Calculated MW	<b>8083 Da</b>

### CD24 Antibody - Additional Information

Dilution	<b>WB~~1:1000</b> <b>IP~~N/A</b>
Purification	<b>Affinity-chromatography</b>
Immunogen	<b>A synthesized peptide derived from human CD24</b>
Description	<b>Modulates B-cell activation responses. Signaling could be triggered by the binding of a lectin-like ligand to the CD24 carbohydrates, and transduced by the release of second messengers derived from the GPI-anchor. Promotes AG-dependent proliferation of B-cells, and prevents their terminal differentiation into antibody-forming cells.</b>
Storage Condition and Buffer	<b>Rabbit IgG in phosphate buffered saline , pH 7.4, 150mM NaCl, 0.02% sodium azide and 50% glycerol. Store at +4°C short term. Store at -20°C long term. Avoid freeze / thaw cycle.</b>

### CD24 Antibody - Protein Information

**Name** CD24

**Synonyms** CD24A

#### Function

May have a pivotal role in cell differentiation of different cell types. Signaling could be triggered by the binding of a lectin- like ligand to the CD24 carbohydrates, and transduced by the release of second messengers derived from the GPI-anchor. Modulates B-cell activation responses. Promotes AG-dependent proliferation of B-cells, and prevents their terminal differentiation into

antibody-forming cells (PubMed:<a href="http://www.uniprot.org/citations/11313396" target="\_blank">11313396</a>). In association with SIGLEC10 may be involved in the selective suppression of the immune response to danger-associated molecular patterns (DAMPs) such as HMGB1, HSP70 and HSP90. Plays a role in the control of autoimmunity (By similarity).

#### **Cellular Location**

Cell membrane; Lipid-anchor, GPI-anchor.

#### **Tissue Location**

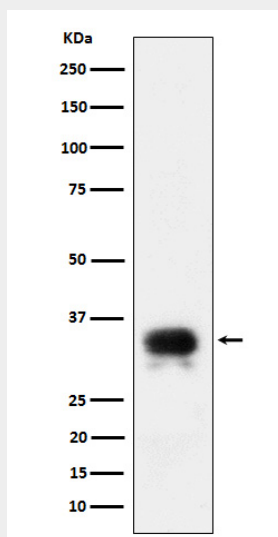
B-cells. Expressed in a number of B-cell lines including P32/ISH and Namalwa. Expressed in erythroleukemia cell and small cell lung carcinoma cell lines. Also expressed on the surface of T-cells.

### **CD24 Antibody - Protocols**

Provided below are standard protocols that you may find useful for product applications.

- [Western Blot](#)
- [Blocking Peptides](#)
- [Dot Blot](#)
- [Immunohistochemistry](#)
- [Immunofluorescence](#)
- [Immunoprecipitation](#)
- [Flow Cytometry](#)
- [Cell Culture](#)

### **CD24 Antibody - Images**



Western blot analysis of CD24 expression in SH-SY5Y cell lysate.